

**Paper Reference(s) 1HI0/12**  
**Pearson Edexcel GCSE (9–1)**

## **History**

**PAPER 1: Thematic study and historic environment**

**Option 12: Warfare and British society, c1250–present and**

**London and the Second World War, 1939–45**

**Thursday 18 May 2023 – Morning**

**Time: 1 hour 15 minutes**

## **Sources Booklet**

**DO NOT RETURN THIS BOOKLET WITH THE QUESTION PAPER.**

## **Sources for use with Section A.**

**SOURCE A:** From the recollections of T L Mackie, published in 1997. In 1940, Mackie was working in the docks as an official of the Port of London Authority. Here he is recalling the events of 7 September 1940.

The daylight revealed a dreadful scene. The greater part of the wooden-built docks was a smouldering fire and the huge warehouses were completely ruined.

Ships, which only a few hours ago had been unloading their cargoes, were now torn apart by the bomb blasts and damaged by the fires. Some had been holed and were sunk, with only a small part of the ship left showing above the water.

(continued on the next page)

**Source A continued.**

**The steel girders of buildings were twisted into indescribable shapes and any brick walls which had survived were standing at dangerous angles.**

**Sadly, this devastation turned out to be more than just the appalling wreckage of buildings. The bombs and fire had taken human lives, and bodies still lay amongst the burned-out ruins.**

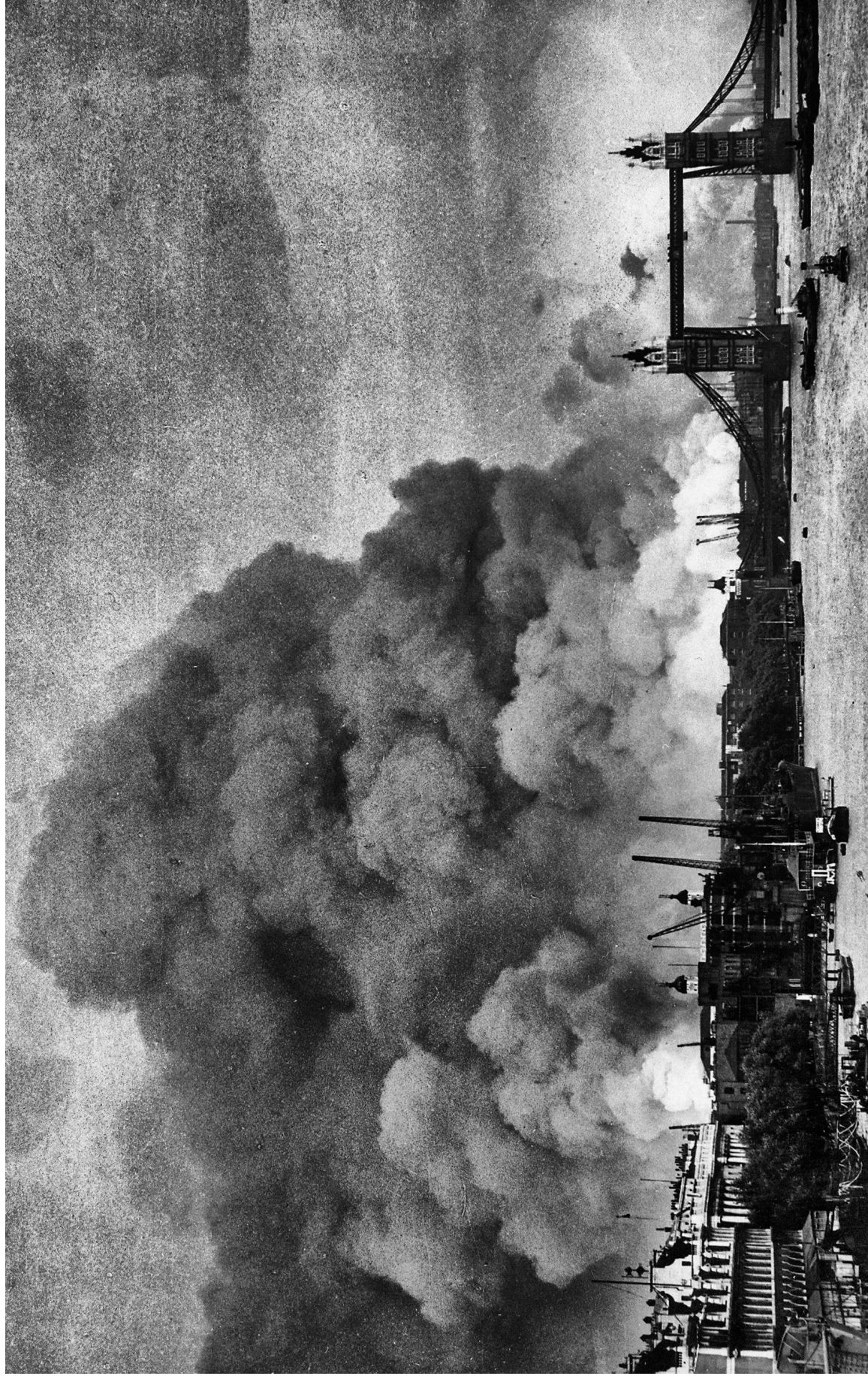
**SOURCE B: A photograph taken soon after the bombing raid, 7 September 1940. It is looking towards the dockyards and the East End of London. Tower Bridge and the Tower of London can be seen. This photograph was used in newspaper reports about the bombing raid.**

**The black and white photograph on the following page shows a huge, thick plume of black smoke arising behind the Tower of London to the left of the image and Tower Bridge to the right. There are some cranes carrying out construction work around the Tower of London. On the River Thames below the scene of devastation is a cluster of small boats.**

**(continued on the next page)**



**Source B continued.**



## **Acknowledgements**

**Source A taken from <http://www.portcities.org.uk/london/server/show/ConNarrative-53/chapterId/788/Docklands-and-the-Blitz.html>; Source B taken from © Niday Picture Library/Alamy Stock Photo**